

# Georgia Vocational Rehabilitation Agency

2026

## SWTCIE Project Overview & Interest Presentation

[SWTCIE\\_Grant@gvs.ga.gov](mailto:SWTCIE_Grant@gvs.ga.gov)



# Required Disclaimer

The contents of this publication were developed under a grant, number H421D220006, from the Department of Education. However, those contents do not necessarily represent the policy of the Department of Education, and you should not assume endorsement by the Federal Government.

(Authority: 20 U.S.C. §§ 1221e-3 and 3474)



# What is the SWTCIE Project?

The SWTCIE project is an initiative to support individuals with disabilities in moving toward meaningful, community-based employment opportunities with fair wages and long-term growth potential.

The project supports participants through

- Workplace readiness skills
- Career pathway exploration
- Internships
- Employment-focused supports



# The SWTCIE Mission

Our mission is to increase opportunities for adults, students, and youth with disabilities who are either contemplating working for or currently employed at subminimum wage to obtain competitive integrated employment in the community.



# Why SWTCIE Matters



- ❑ Connecting students and families to pre-employment and transition services
- ❑ Coordinating referral pathways and support opportunities
- ❑ Collaborating on transition-focused events, trainings, and presentations
- ❑ Expanding access to work-based learning and competitive integrated employment experiences
- ❑ Strengthening long-term employment outcomes for students, youth, and adults with disabilities across Georgia

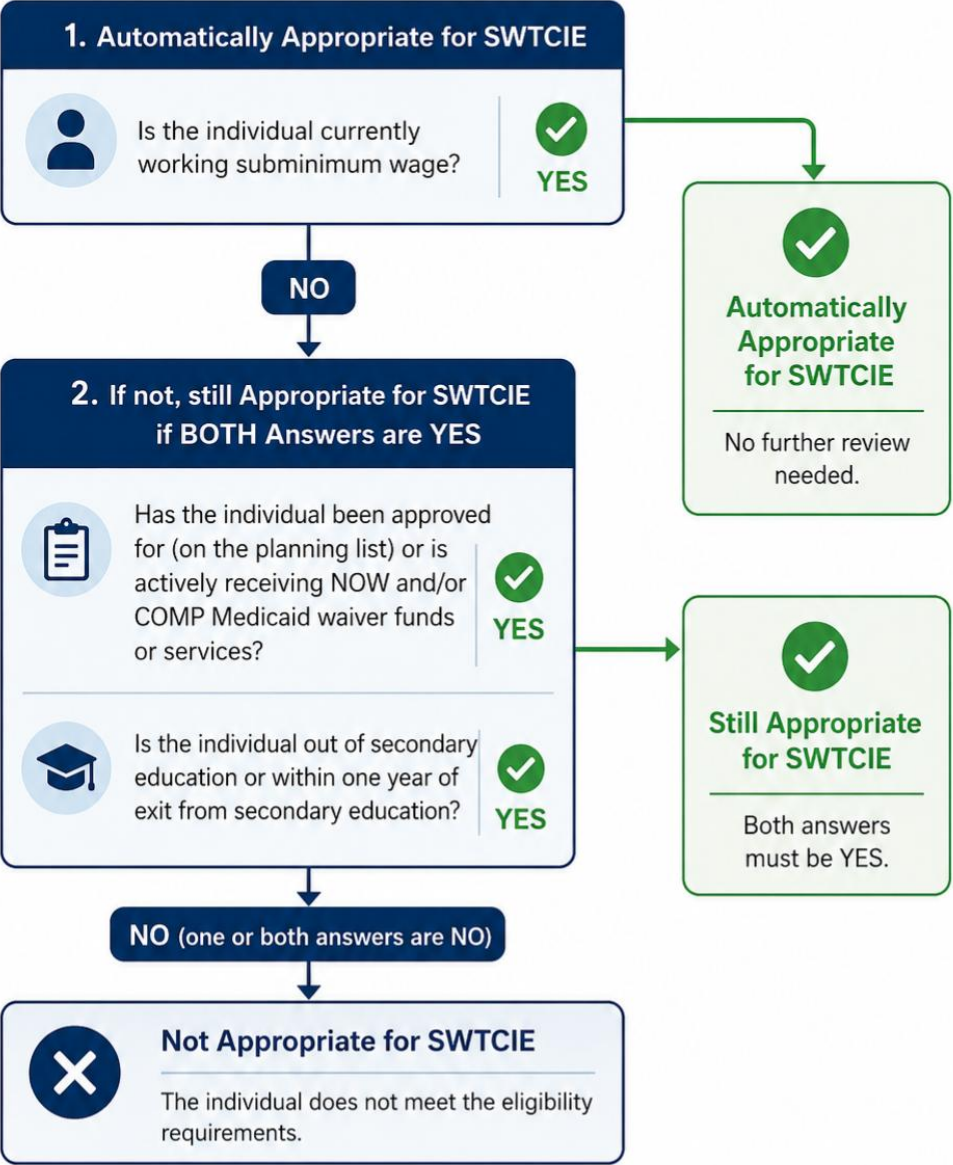


# What Does CIE Mean for My Family Member?

- ❑ **Competitive Integrated Employment (CIE) means working in the community alongside people with and without disabilities.**
- ❑ **They will earn at least minimum wage, and often more based on skills and experience.**
- ❑ **They will have opportunities for raises, promotions, and career growth.**
- ❑ **They can receive workplace benefits such as health insurance, paid time off.**
- ❑ **CIE supports greater independence, confidence, and financial stability.**
- ❑ **They can build independence and be more connected to their communities.**
- ❑ **Workers in CIE are valued for their skills, talents, and contributions in inclusive workplaces.**
- ❑ **CIE focuses on personal choice, career goals, and opportunities to grow based on their strengths and interests.**



# Who Qualifies for SWTCIE?

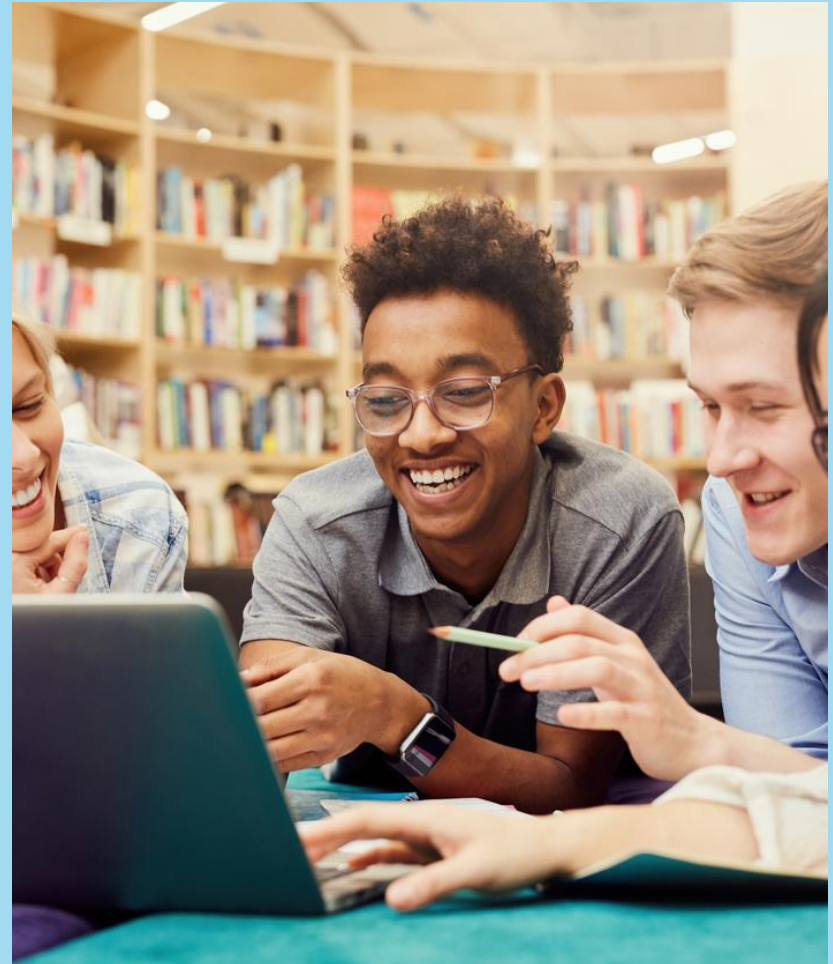


# Core SWTCIE Services

## Provider-Led Discovery & Vocational Assessment

Community-based exploration, situational assessments, and development of a comprehensive vocational profile

- Customized Employment Development
- 80-Hour or Up to 90-Day Internship in a Competitive Integrated Setting
- Job Coaching & On-the-Job Supports
- Transition & Stabilization Planning



# Our Commitment

The SWTCIE Team affirms that individuals with disabilities deserve:

- Equitable wages
- Competitive, integrated employment opportunities
- Meaningful workplace inclusion
- Dignity and economic independence



# What Next?

I will be sending out the slide presentation along with an interest form sign up to all participants after this meeting ends.

If you indicate interest in our program, a member of our team will be contacting you to discuss the next steps to help your family member transition into CIE through our SWTCIE program.



# Questions?

Please email us [SWTCIE\\_Grant@gvs.ga.gov](mailto:SWTCIE_Grant@gvs.ga.gov)

