



Roosevelt Warm Springs

Informational Packet



706-655-5000



Scan QR Code For Our
Website



Scan QR Code For Our FB
Page





History of RWS

Put simply, Roosevelt Warm Springs is a residential campus where students learn life skills and work towards professional certifications with the final goal being employment. Students are referred through their VR counselor.

Franklin Delano Roosevelt established the Georgia Warm Springs Foundation (now Roosevelt Warm Springs Vocational Rehabilitation Campus) in 1927 as a polio rehabilitation center. He knew firsthand the challenges of living with a physical disability, and he wanted every polio survivor to receive the therapy and the training they needed to live as independently as possible. His indomitable spirit set the tone at Warm Springs, one of laughter, fun, camaraderie and persistent effort toward each individual's rehabilitation goals. Roosevelt's patronage made Warm Springs the most famous polio rehabilitation center in the country attracting patients from every state and from many other countries. Roosevelt died at the Little White House on April 12, 1945, but the healing work of the Foundation continued.

In the mid-1960s, when the Salk and Sabin vaccines had largely eliminated polio from the United States, the Foundation opened its doors to all people with disabilities. At the same time, the State of Georgia opened the Georgia Rehabilitation Center in Warm Springs to provide vocational rehabilitation training and services to the people of the state. The two organizations operated independently until 1974 when the state acquired the private Georgia Warm Springs Foundation Hospital and combined the two facilities into one comprehensive medical and vocational rehabilitation center under the banner of Roosevelt Warm Springs.

PATHWAYS AT RWS



8 Pathway Options

Timeline

- All Pathways have a timeline of 16 weeks with 2 weeks added for transition activities.
- Students will take an assessment at the end of the instructional semester for specific certifications.

Certifications

- Certifications earned are nationally recognized and crucial for gainful employment.

Workplace

- Many Pathways have opportunities for on the job experience. The last two weeks, students work on preparing for the workforce by creating resumes and practicing interviewing skills.





Certified Nursing Assistant



Program Description

The CNA/Home Health Aid Program is a 16 week classroom and internship experience that will prepare you to be successful for the CNA state licensure. There are 14 weeks of classroom instruction and clinical experience followed by a two week test prep and testing period.



Training and Experience

Clients will have experiences in the classroom and CNA lab along with internship experiences at a local nursing home. Students are required to have a TB test and other required vaccinations.



Career Outcomes

The Certified Nursing Assistant Program prepares students to test for their state CNA licensure. Students attaining licensure can work in nursing homes, rehabilitation centers, hospitals, clinics, and other places that provide medical services. Some careers in the Home Health field include private home health care or working for a Home Health Provider.

Program Criteria

Clients participating in the CNA program must have:

- 6th grade reading and math level or above
- The ability to lift 40-50 pounds
- TB test and background check

Certifications

Certifications may be earned in CPR/First Aid; C.N.A State Licensure; and Home Health Care



CVS/Retail



Program Description

The CVS/Retail Pathway is a 16 week program with classroom instruction and an internship at a community CVS or retail store. Additional retail certificates are offered in this program.



Training and Experience

Clients will have classroom training, stackable certification opportunities, and hands-on training at the community CVS store. Other internships may be available.



Career Outcomes

Clients completing the CVS/Retail Pathway are prepared for careers in this field such as cashier; stock clerk; unloader; inventory clerk; sales associate; customer service representative; loss prevention officer; visual merchandiser; and team/lead management.

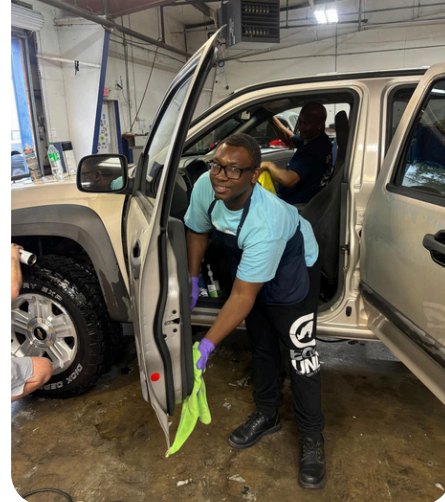
Program Criteria

Clients participating in the CVS/Retail program must have:

- 3rd/4th grade reading level or above
- Physical ability to perform job tasks

Certifications

Certifications may be earned via NRF (National Retail Foundation) Rise Up - Retail Industry Fundamentals; Business of Retail; Customer Service and Sales. Additionally, students earn certificates from completion of the CVS Cognitopia modules.



Auto Detailing



Program Description

The Auto Detailing Pathway is a 16 week program that prepares clients to pursue careers in auto detailing. Additionally the program includes instruction on self-employment opportunities as an auto detailer. The program includes classroom activities, extensive hands on training, and virtual training in auto painting.



Training and Experience

Clients will participate in hands-on training to learn best practices for auto detailing and safety requirements. They will also learn how to physically inspect car for damage, check fluids and oil, and determine thread depth on tires.



Career Outcomes

This Pathway prepares clients for self-employment as an auto detailer or job with an established auto detailing company. A graduate of the program may also pursue a career at a body shop, car dealership, car rental business or car wash.

Program Criteria

Clients participating in the Auto Detailing program must have:

- 3rd grade reading level or above
- Physical ability to perform job tasks

Certifications

Enrolled clients can earn industry recognized certifications through the International Detail Association (IDA) and via OSHA10 - Auto Safety.



Hospitality



Program Description

The Hospitality Pathway offers stackable certifications in the hospitality industry. The program is 16 weeks in length and the course curriculum is tailored to each specific job certification.



Training and Experience

Enrolled clients will be taught using a variety of modalities through in person discussion and instruction, on-line instruction, Learning Labs, and real-life experiences both on our campus and in our local community.



Career Outcomes

The Hospitality Pathway prepares clients for a variety of careers in the industry. Some careers are Hotel Desk Clerk or Receptionist; Hotel Room Attendant/Housekeeper; Restaurant Server; Maintenance Worker for hotels, apartments, and condos; Breakfast Attendant; Cafeteria Worker; Hospital Food Service; and a Cook or Food Service Worker.

Program Criteria

Clients participating in the Hospitality program must have:

- 4th grade reading level or above
- Physical ability to perform job tasks

Certifications

Certifications earned through AHLEI (American Hotel and Lodging Educational Institute) and include; Guest Room Attendant; Restaurant Server; Kitchen Cook; Breakfast Attendant; Front Desk Receptionist; Maintenance Employee; and Tourism. Students may also obtain the OSHA10 - Culinary certificate.



Logistics- Forklift/Warehousing



Program Description

The Logistics-Forklift/Warehouse Pathway is a 16 week program that prepares clients for skills needed in the supply chain industry as well as learning to safely operate a forklift and other warehousing equipment.



Training and Experience

Clients will have experiences in the RWS warehouse where a variety of equipment and methods of warehousing and material handling will be learned. There will also be classroom instruction that includes simulator training and opportunities for earning certifications.



Career Outcomes

Clients will be trained for careers in this field that include material handler; forklift operator; stock clerk; order picker; shipping and receiving clerk; warehouse laborer; loader/unloader; and package handler.

Program Criteria

Clients participating in the Logistics/Forklift program must have:

- 5th grade reading level or above
- Physical ability to lift 40-50 pounds

Certifications

Enrolled clients may earn certifications via MSSC (Manufacturing Skills Standard Council) as a Certified Logistics Associate and a Certified Logistics Technician. Additionally, students can obtain certifications in OSHA10 - Industry, and Forklift Operation.



Light Electrical and Carpentry



Program Description

The Light Electrical and Carpentry Pathway is a 16 week program that gives clients experience and training in both light electrical and carpentry components of the construction trade.



Training and Experience

This Pathway is a blend of online and direct face to face classroom instruction along with hands on carpentry and wiring experience.



Career Outcomes

Clients completing this pathway are prepared for a variety of careers which include employment with a construction company, and other industries that involve light electrical work and carpentry.

Program Criteria

Clients participating in the Light Electric & Carpentry program must have:

- 8th grade reading level or above
- 6th grade math level or above
- Physical ability to lift 40-50 pounds

Certifications

Clients earn certifications in OSHA10 - Construction as well as through the National Homebuilders Insititue (HBI) in PACT Core, PACT Electric and PACT Carpentry.



Heavy Equipment Operator



Program Description

The Heavy Equipment Operator Pathway is one of all a few offered in the entire state and prepares students for well paying, high-demand careers in this field. Students will participate in a blend of face to face instruction, online curriculum, virtual practice via state of the art simulators, and hands on experience operating real bulldozers and excavators.



Training and Experience

Clients will utilize the National Center for Construction Education and Research (NCCER) approved SimScholar nationally recognized curriculum through direct instruction and online modules. As part of the training process, students will practice their skills on simulators that are modeled after authentic Caterpillar bulldozer and excavator controls, and certificates will be earned for passing required simulator tasks as well as the aligned curriculum tests. At the end of the program, students will participate in a Capstone project where they will be observed and graded by certified industry professionals on a construction site.



Career Outcomes

Articulated Dump Truck Operator, Backhoe Operator, Bulldozer Operator, Excavator Operator, Forklift Operator, Heavy Equipment Service Technician, Construction Site Manager

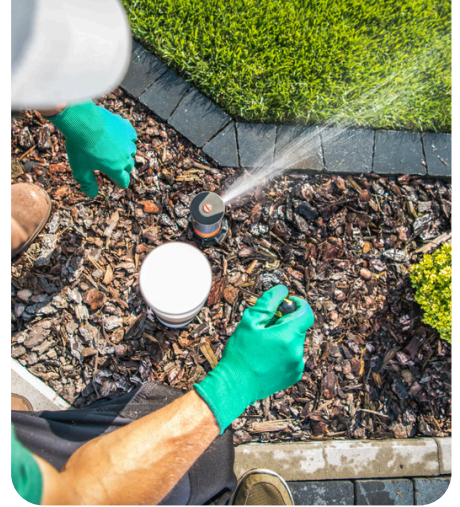
Program Criteria

Clients participating in the Heavy Equipment Operator program must have:

- 6th grade reading/math level or above
- Ability to perform all tasks and operations

Certifications

SimScholar certificates are earned for the successful completion of required performance tasks (on our virtual simulators) and earning a passing score on the correlating curriculum assessments. Additionally, students will complete a hands-on Capstone Project operating actual equipment



Landscape Maintenance & Design



Program Description

Clients participating in the Landscaping Maintenance & Design program experience a blended learning model that utilizes the nationally renowned Home Builders Institute (HBI) online curriculum, direct face to face instruction and hands on practice of the skills/concepts learned.



Training and Experience

Clients will learn using face to face instruction, hands on instruction and real life practical application to learn skills needed for landscaping maintenance and design. Clients in the program will get experience practicing skills on real equipment on the RWS grounds and other community sites.



Career Outcomes

Clients participating in this pathway will be eligible for career opportunities working in any landscaping/grounds business as well as self-employment in this field.

Program Criteria

Clients participating in the Landscape Maintenance and Design program must have:

- 4th grade reading/math level or above
- Ability to perform all tasks and operations

Certifications

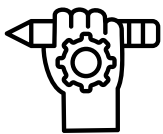
Clients have the opportunity to earn certificates in HBI PACT Core, HBI PACT Landscaping, and OSHA-10 - Industry.

Typical Day at RWS



Monday, Wednesday, and Friday

On Monday, Wednesday, and Friday, students are learning in Pathway classrooms from 9:00 - 3:00 with an hour for lunch.



Tuesday & Thursday

On Tues and Thurs, students have elective classes as well as tutoring. They also have a specific hands-on lab time correlated to their Pathway.

Some elective classes are as follows:

- Blaze Sports
- CTR Recreation
- Independent Living
- Personal Finance
- Fine Arts
- Technical Theatre
- Workplace Etiquette



Clubs

There are many different clubs at RWS that students can join such as Student Council, Fire Marshal, Book Club, Basketball Team, Theatre Club and more!



Field Trips

On the weekends, students are offered different field trips that they can participate in. A few field trips students have enjoyed are as follows:

- Braves Game
- Six Flags
- Perry Fair
- Infantry Museum
- Callaway Gardens
- GA Aquarium
- Dragon Con

ROOSEVELT WARM SPRINGS HAS A TOUR FOR YOU!



EMAIL TO SIGN UP!

RWS_Tours@gvs.ga.gov

INCLUDE IN THE EMAIL:

- Contact Name, Email address and phone number
- What type of tour? Parent, Transition or School Staff
- Number of participants (Max 32)



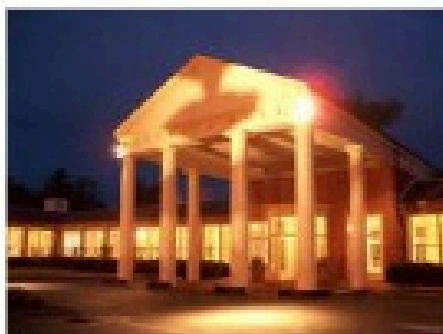
PARENT

- For parents and students to come and visit the campus and learn about our pathways.
- Times are 10:30 - 1:00



TRANSITION

- For school staff to bring groups of students to see the campus and pathway offerings.
- Times are 10:00 - 1:00.
- Staff needs to provide a roster on day of tour



SCHOOL STAFF

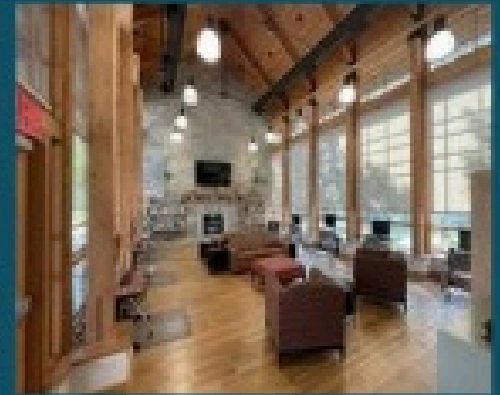
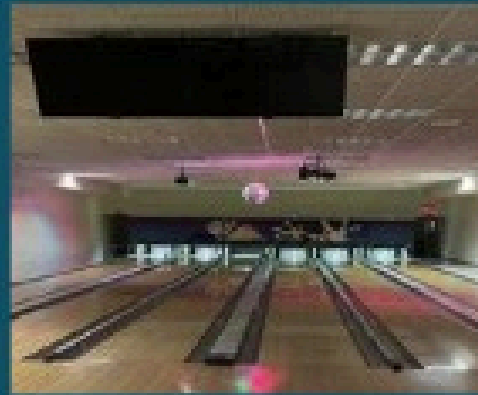
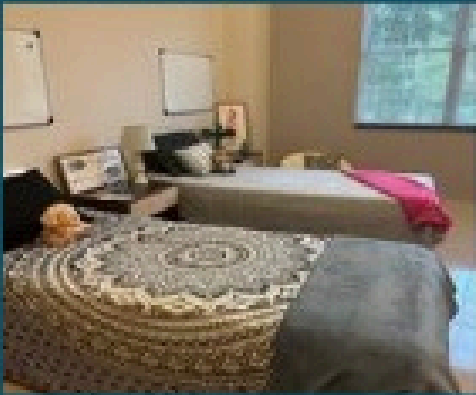
- For school staff, transition coordinators, providers and other educators.
- Times are 9:30 - 1:00



**ALL STUDENTS VISITING ON A TOUR MUST HAVE A
PRE-ETS PERMISSION FORM COMPLETED BEFORE
ARRIVAL.**

Dorm

Our residents are given the opportunity to live in a state of the art dorm! One side is apartment style living and the other side is regular dorm style living.



Center for Therapeutic Recreation

Our residents are provided opportunities to enjoy the Center for Therapeutic Recreation (CTR) where we have a bowling alley, weight room, basketball court, racquetball court, art area, game room, and outdoor equipment such as bikes.

Find us on



SCAN
ME



Look at the Current Activities We Have Happening on Campus!