

WHY IT MATTERS?



Georgia has a 25% exceptional education drop-out rate.

CCRPI

LITERACY SKILLS

CONNECTION TO PATHWAYS

SOFT SKILLS

GRAD RATES



POST-SECONDARY OUTCOMES REPORTED TO DOE

COMMUNITY PARTNERSHIPS

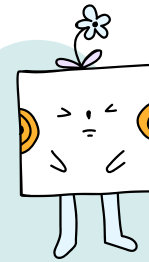


P2P Grant targets students with disabilities in the age range of 10-14.

MISSION OF GRANT

To substantially improve training and preparation of children and youth with disabilities in Georgia to eventually obtain and maintain competitive, integrated, employment in conjunction and coordination with other state, local, and private entities.

OUR GOALS



- ★ **Goal 1**
Deliver transition lessons and instructional components to students with disabilities
- ★ **Goal 2**
Increase awareness and access to VR and post secondary opportunities
- ★ **Goal 3**
Cultivate partnerships between CILs, GVRA, and LEAs to support students with disabilities and their families
- ★ **Goal 4**
Foster collaboration between CILs and LEAs to support students with disabilities through early intervention of transition services to meet high school and post-secondary goals
- ★ **Goal 5**
Grow CILs' service capacity to youth by serving middle school aged students with either an IEP or 504

The contents of this publication were developed under a grant number H421E230027 from the Department of Education. However, these contents do not necessarily represent the policy of the Department of Education, and you should not assume endorsement by the Federal Government. (Authority: 20 U.S.C. 1221e-3 and 3474)




What schools need to know about the

P2P – PATHWAYS TO PARTNERSHIPS GRANT



CONTACT US!

 p2p_grant@gvs.ga.gov



<https://gvs.georgia.gov/transition-services/pathways-partnerships-grant-project>

ROLES



P2P Team

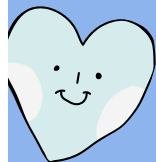
- **Oversee grant initiatives and guidance**
- **Provide collaborative oversight to transition services instructional component**
- **Oversee collaborative efforts between LEAs, CILs, students and parents**
- **Assist in providing avenues for CIL support efforts to students and parents**
- **Cultivate relationships between CILs, GVRA, LEAs, students families, and community partners**

CILs

- **Actively participate in transition services instructional initiative**
- **Provide unique learning opportunities through CIL programs for students participating in the P2P initiative**
- **Cultivate and sustain relationships with stakeholders and school systems**

LEAs

- **Provide time in school day for Pre-Ets lesson implementation**
- **Build relationships with GVRA and CILs**



QUALITY MEASURES



- 1 Number of students in the P2P Program enrolling in Pre-Ets Programs in high school through GVRA
- 2 Number of parent/student/LEA surveys completed

- 3 Number of students and families who are provided information regarding services provided by CILs and GVRA
- 4 Number of students with disabilities and families who actively participate in services provided by the CILs and GVRA
- 5 Number of students with disabilities who actively participate in Pre-Ets educational opportunities

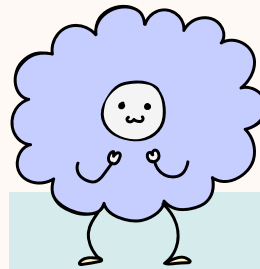
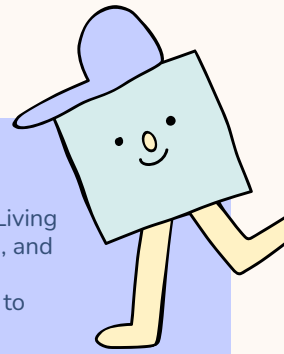
P2P GRANT PARTNERS AND CURRICULUM

PRE-ETS

Pre Employment Transition Services are career focused services that include: Job Exploration, Workplace Readiness, Post Secondary Options, Self-Advocacy, and Work Based learning

CIL

Centers for Independent Living provide training, coaching, and resources to individuals experiencing barriers due to disabilities



CIE

Competitive Integrated Employment is a term used for an employee with a disability that earns a similar wage and works with others without a disability



SEA

A SEA is a State Educational Agency such as the Georgia Department of Education

GVRA

Georgia Vocational Rehabilitation Agency is a state agency that helps students and adults with disabilities become active members of society by finding employment

LEA

An LEA is a Georgia Local Education Agency such as a school system or individual school